

# Using the Wilder Collaboration Factors Inventory to Assess the Supplemental Nutrition Assistance Program – Education (SNAP-Ed) Coalitions in Arizona: Results from Four Counties

Presented by: Lauren McCullough, MPH

---



THE UNIVERSITY OF ARIZONA  
COLLEGE OF AGRICULTURE & LIFE SCIENCES

**Cooperative Extension**

Nutrition Network



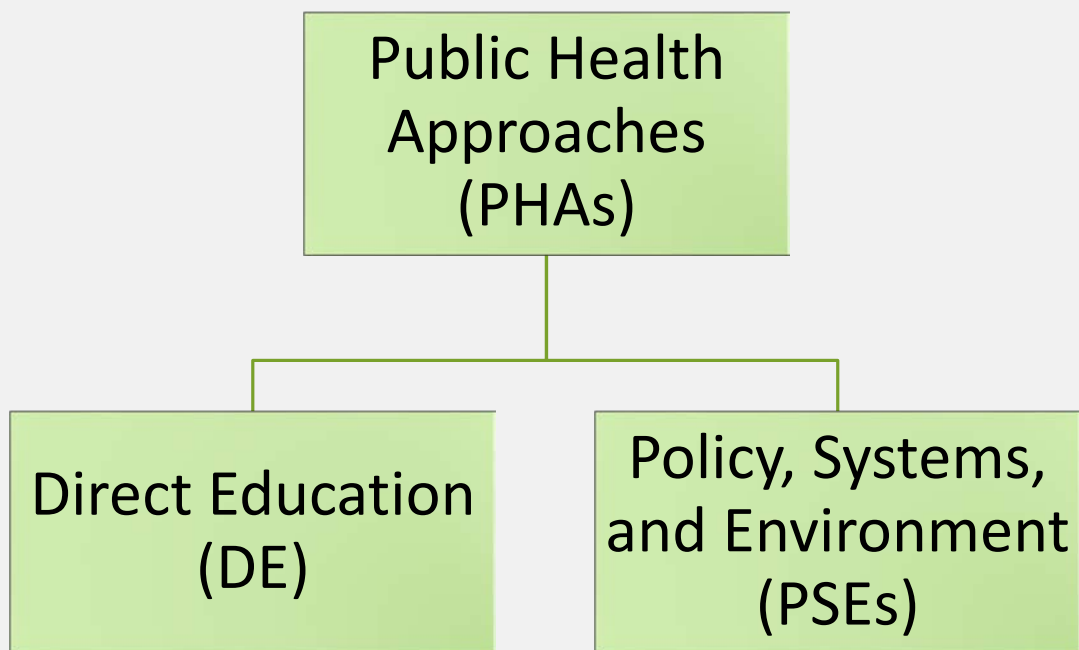
# Outline of Presentation

---

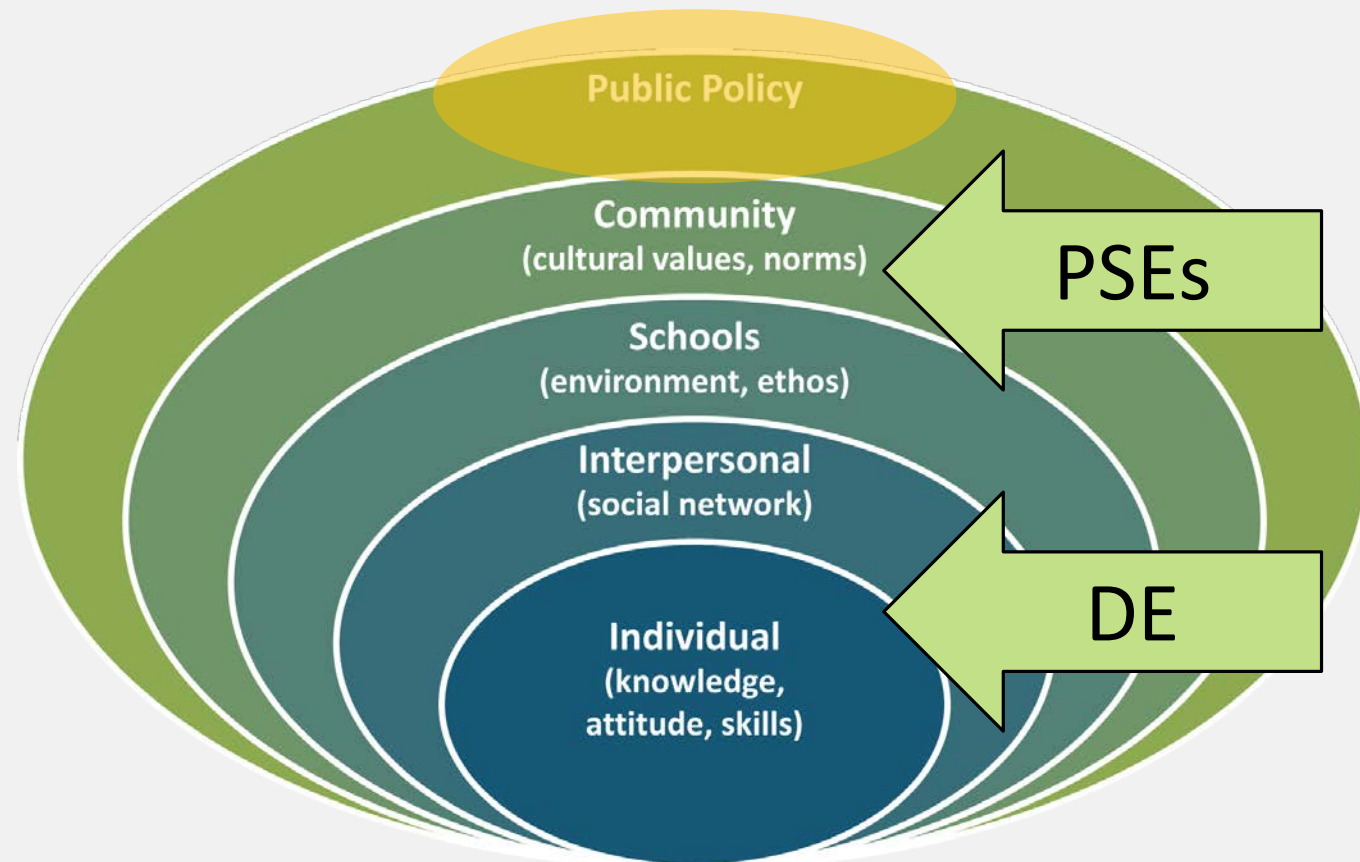
- **Background:** *Why evaluate coalitions' capacity?*
- **Methods:** *How to evaluate coalitions' capacity.*
- **Results:** *How to use results to strengthen coalition capacity.*
- **Conclusions**
- **Questions**



# Background

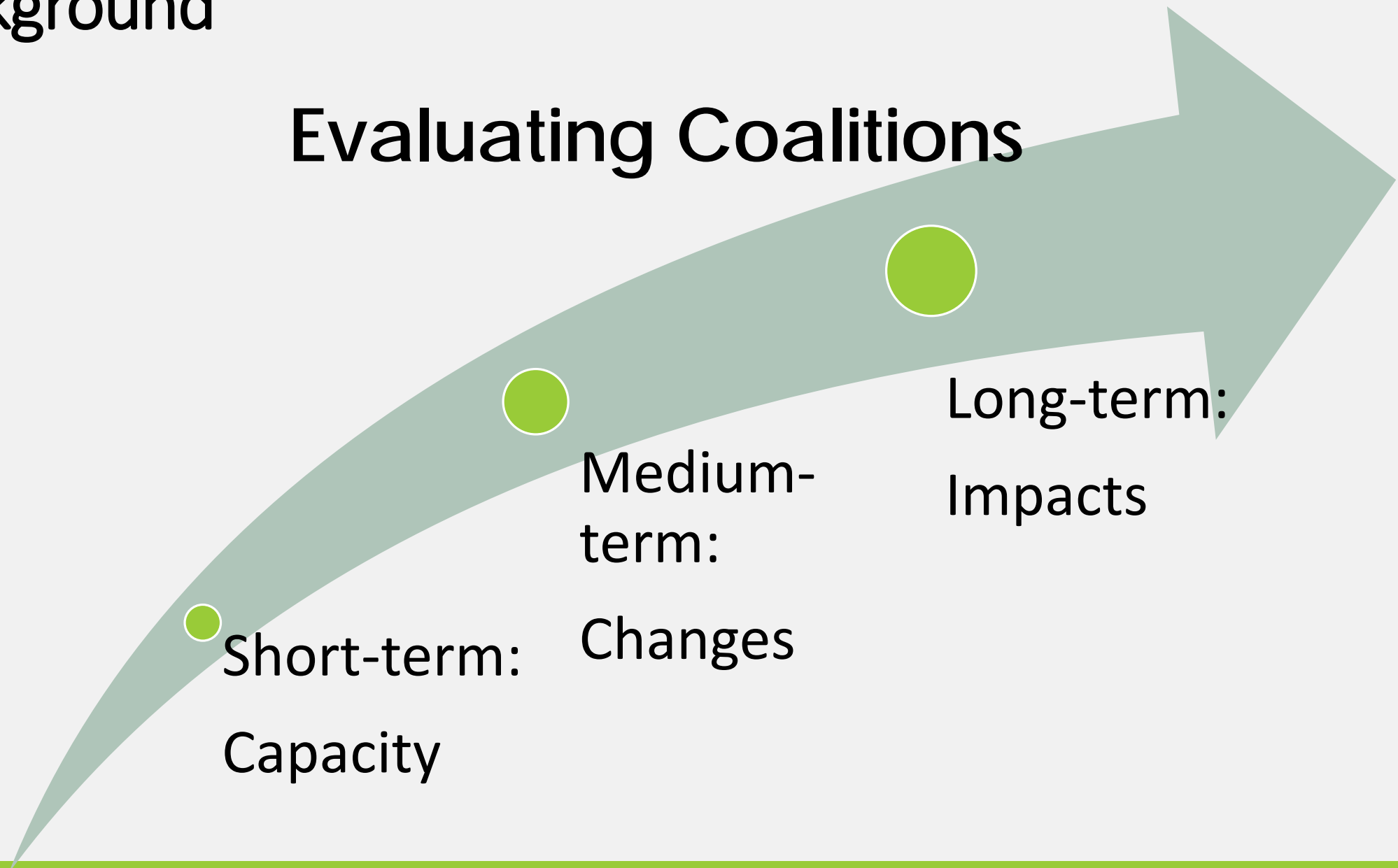


## Socio-Ecological Model



Background

# Evaluating Coalitions

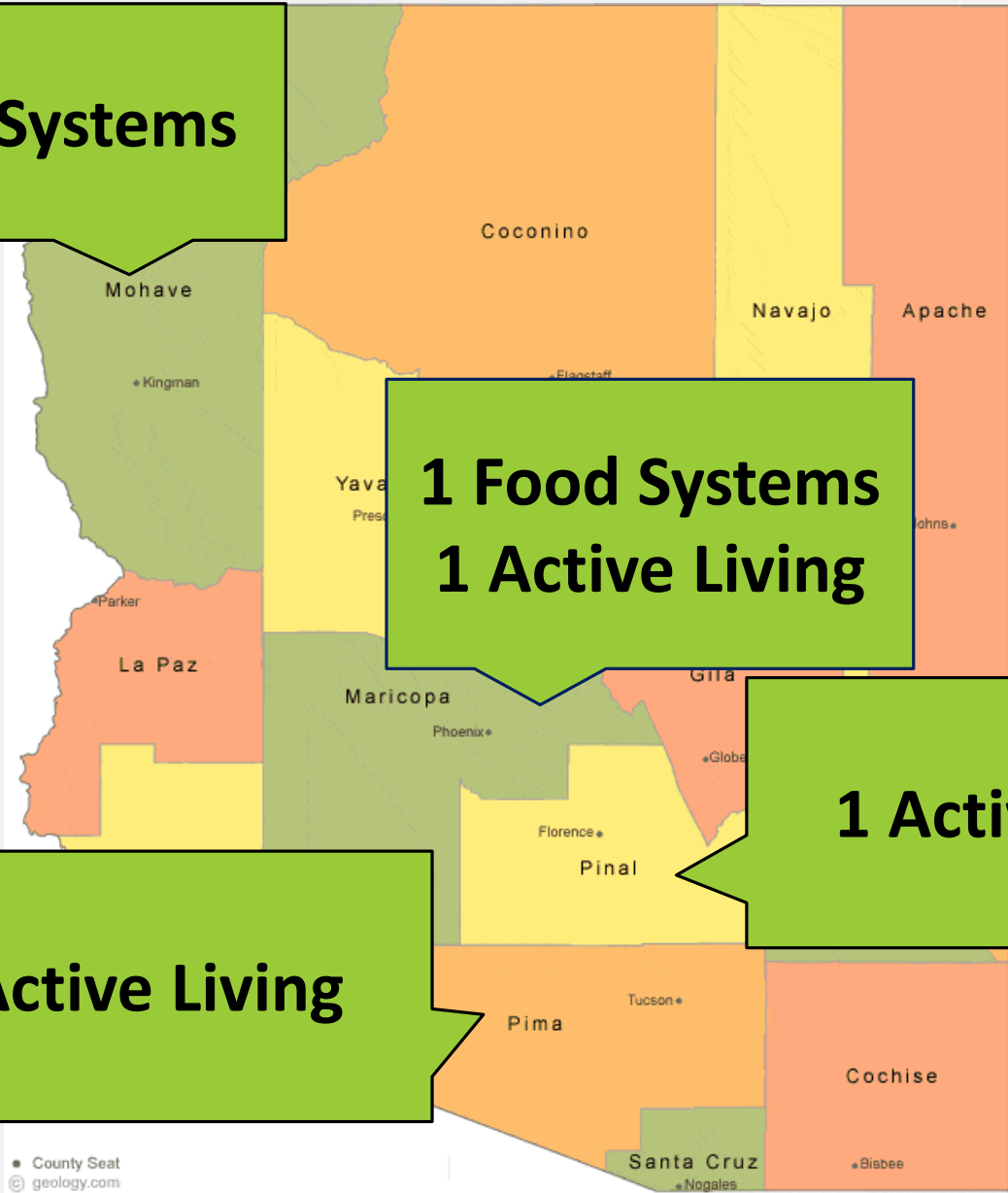


Short-term:  
Capacity

Medium-term:  
Changes

Long-term:  
Impacts

**1 Food Systems**



**1 Food Systems  
1 Active Living**

**1 Active Living**

**2 Active Living**

● County Seat  
© geology.com

# Methods

Partnered with SNAP-Ed in Food Systems and Active Living work

Multi-sectoral coalitions (Five or more organizations involved)

Existed for six+ months

✓ Qualified for assessment

# Methods

The Wilder  
Collaboration  
Factors  
Inventory  
(WCFI)

- 40 Questions on Likert Scale (1.0 – 5.0)
- Validated
- Anonymous, Brief (15 minutes)
- Online or Paper-Based
- Measured 20 collaboration Success Factors

# Methods

Members see collaboration in their self-interest

This benefits us.

Unique Purpose

No other organization is doing this.

Sufficient funds, staff, materials, and time

We have funding!



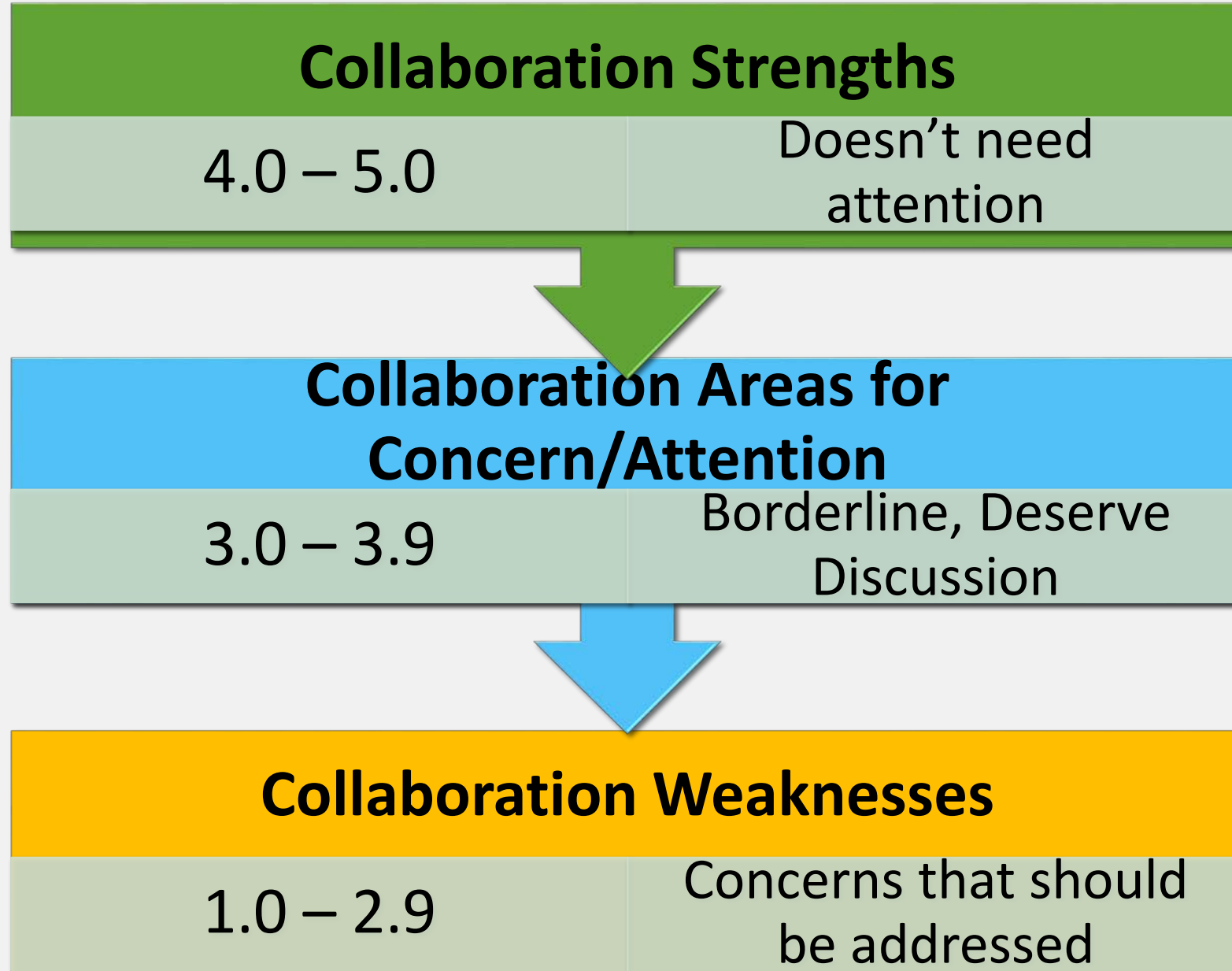
# Methods

## WCFI Surveys Distributed and Completed

County	# Distributed	# Completed
Maricopa	33	17
Mohave	32	9
Pima	32	17
Pinal	34	7
<b>Total</b>	<b>131</b>	<b>50</b>

# Methods

# Scoring



# Results

## Strengths Average Success Factors

Success Factors

Collaboration in Self-interest

4.5

Unique Purpose

4.2

4.0

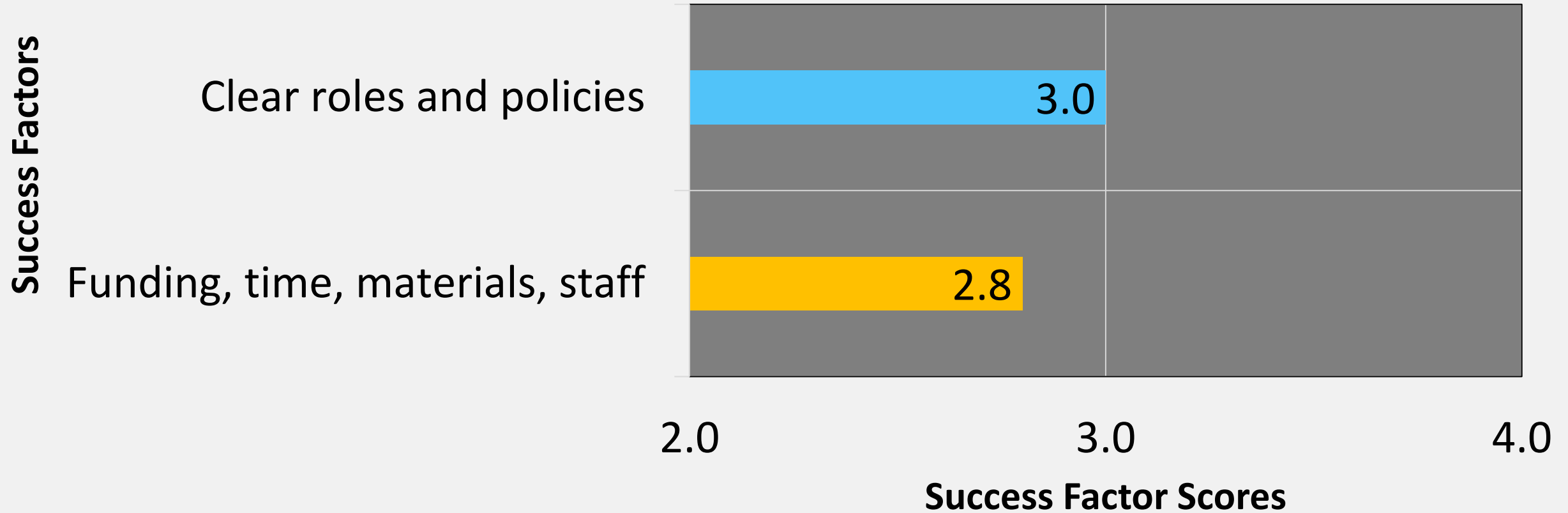
5.0

Success Factor Scores



# Results

## Weaker Average Success Factors



# Results

## Reported to the Coalitions

### # Surveys Distributed

- # Surveys Completed

### Stronger Success Factors

- Comments from Participants

### Weaker Success Factors

- Comments from participants
- Recommendations from Evaluation Team

# Conclusions



1.

Assess the coalition



2.

Share results with coalition members



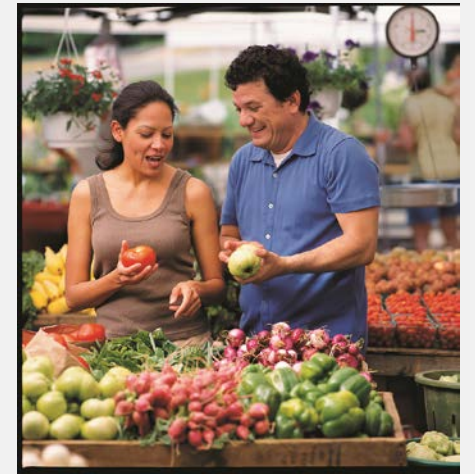
3.

Implement changes to strengthen capacity



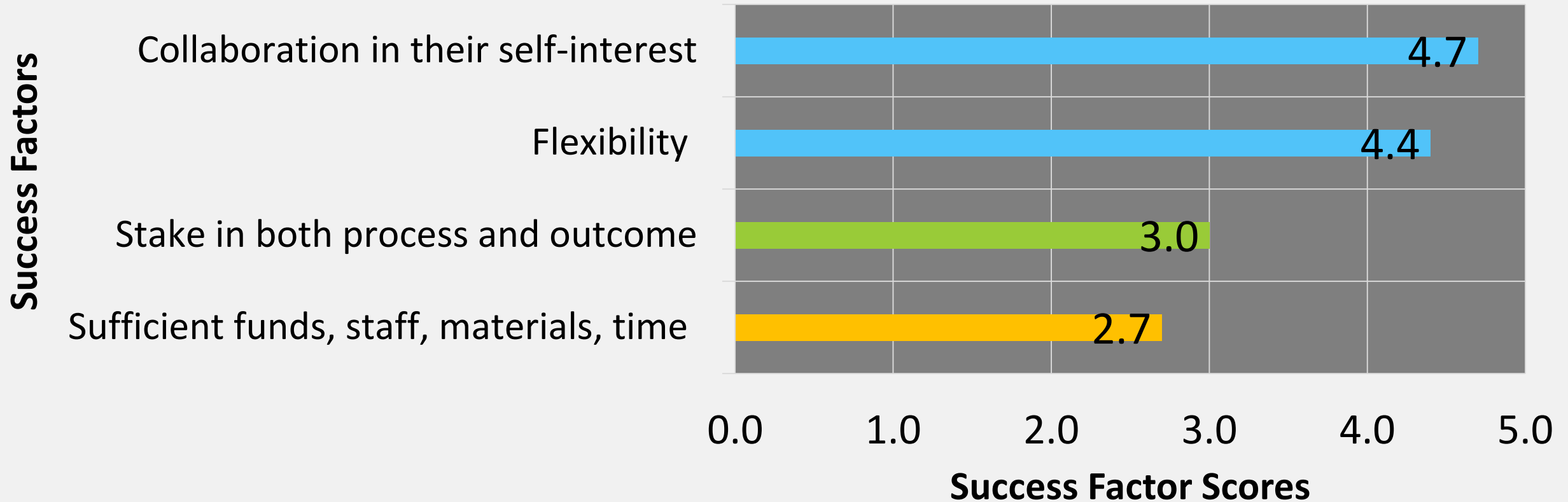
4.

Changes and impacts in food systems and active living



# Case Study: Healthy South Tucson

## Highest and Lowest Success Factor Averages



**Weak:**  $\leq 2.9$    **Needs Attention:** 3.0-3.9   **Strong**  $\geq 4.0$

# Case Study

How the Results and Recommendations were used:

✓ Members share stake in process and outcome

✓ Sufficient, funds, staff, materials and time





# Special Thanks to:

- Principal Investigator of the University of Arizona Nutrition Network –  
Scottie Misner
- The University of Arizona/Arizona Nutrition Network SNAP-Ed Evaluation  
Team – Laurel Jacobs and Kathryn Orzech
- Co-Authors and participating counties – Vanessa Farrell, Traci Armstrong  
Florian, Dan McDonald, Patricia Zilliox, and Cathy Martinez



THE UNIVERSITY OF ARIZONA  
COLLEGE OF AGRICULTURE & LIFE SCIENCES  
**Cooperative Extension**  
Nutrition Network



# Questions and Resources:

To learn more about the SNAP-Ed Framework Logic Model and Interpretative Guide:

<https://snaped.fns.usda.gov/materials/snap-ed-evaluation-framework-and-interpretive-guide>

To learn more about the WCFI:

<http://wilder.org/wilder-research/research-services/pages/wilder-collaboration-factors-inventory.aspx>

Contact Info: Lauren McCullough | [LaurenMcCullough@email.Arizona.edu](mailto:LaurenMcCullough@email.Arizona.edu)